

Maintenance &
Manufacturing

General Merchandise & Packing Materials

Distribution Equipment & Building Materials

Leasing

Insurance

Petroleum

Liquefied Petroleum Gas

Taiyo Nissan
Automobile Sales

Real Estate

Global Trading Support

Logistics Support

As a member of Nippon Express Group, Nittsu Shoji leads in logistics and international merchandise distribution in the 21st century.

Corporate Philosophy



<http://www.nittsushoji.co.jp>

Business Overview



General Merchandise & Packing Materials Division



Petroleum Division



Distribution Equipment & Building Materials Division



Liquefied Petroleum Gas Division



Leasing Division



Real Estate Division



Insurance Division



Global Trading Support Division



Maintenance & Manufacturing Division



Logistics Support Division



Overseas Offices (Overseas Group Companies)



Supporting logistics, consumers, and industry with diverse products, services, and outstanding development capabilities

Our General Merchandise Division offers a wide variety of products for creating optimal business environments. Moreover, our nationwide network sells food products supplied directly from the farm to general consumers. Our Packing Materials Division focuses its industry-leading development capabilities on the creation of original packing materials to cater to individual corporate needs.

General Merchandise Division

Working in support of the optimal modern business environment

We offer a full range of products that are essential to today's business environment, from office supplies to information equipment, daily necessities, and gift items. We also operate a mail-order service in cooperation with Nippon Express that sell food products delivered directly from the farm to the homes of consumers. Our goal is to provide high quality products and services that anticipate the user requirements of tomorrow.

Online Shopping Site Delivering Select Food Items from Japan and Abroad

“Nittsu Shoji Shop”

<http://www.aloz.jp>



Major Products

- Office equipment Copy machines, multifunction printers, facsimiles, shredders, voucher cutting machines, voucher copying machines, teller system equipment, postage franking machines, barcode readers, copying paper, fax paper, toners
- Communications equipment Cell phones, telephone switchboards
- Office equipment Office furniture, office supplies
- Daily necessities Home appliances, bedding, imported miscellaneous goods, sporting goods
- Work clothes Staff uniforms, safety shoes, and other related articles
- Cash transport Mail bags, trunks, connectors
- Gift items Produce directly from the farm, articles for the mid-year and year-end gift seasons, gift vouchers
- Merchandise vouchers Book vouchers, gift vouchers issued by QUO CARD Co., Ltd.
- Other goods and services Supplies for emergencies, maps produced by Zenrin Co., Ltd., publications, import/export agency services, custom-made promotional articles

Packing Materials Division

Comprehensive packing solutions based on industry-leading technology

The Packing Materials Division engages in the comprehensive development, design, and manufacture of all types of packing materials. Products include special-purpose cases custom designed to meet individual transportation requirements as well as resource-efficient reusable packing materials. The Packing Materials Divisions commands outstanding technical capabilities especially in packing materials for merchandise of unusually complex shapes. Packing materials services are available at offices nationwide. Continuous product enhancement, cost reduction efforts, and an established system for instant delivery are self-understood.



State-of-the-art carton former model "Evolve"



High quality corrugated board cases

Major Products

A comprehensive range of corrugated board cases, packing materials, containers, Nittsu standard cartons, single-wall corrugated boards, home-delivery packing (a comprehensive range of boxes, bags, labels, covers), packing materials for home moving, office transfers, overseas relocation, art objects, and air cargo



From distribution equipment to building construction - Propositions for all requirements

The Distribution Equipment Division offers solutions for logistics rationalization, labor saving equipment for cargo handling, warehousing, transportation, and forwarding, as well as products with environment-relevant features. The Building Materials Division contracts for all types of building construction projects and sells construction materials and equipment.

Distribution Equipment Division

Sophisticated system propositions to support customers' logistics rationalization

The Distribution Equipment Division offers planning and propositions for the systemizing of customers' logistics operations based on logistics-center structures, warehousing, and transportation equipment tailored to customers wishes. Solutions reflect the Division's highly successful cost reduction efforts such as through the overseas production of roll box pallets and box pallets. Moreover, in the environmental product line, waste compactors and recycling-based products marketed by the Division offer significant reductions in industrial waste disposal costs through waste compacting and volume reduction of waste such as films, corrugated boards, and packing bands.



Conveyer systems featuring outstanding safety and economy



Fold-up box pallet



Roll box

Major Products

Cargo handling, warehousing, transporting, and forwarding equipment, logistics peripherals, cargo moving equipment, environment management equipment, cooling equipment, and products made from recycled materials

Building Materials Division

Construction project diversity derived from years of experiences and know-how

Nittsu Shoji contracts for all types of building construction projects, spanning the width from high-rise buildings to logistics facilities. Thanks to our logistics experience and know-how accumulated over many years, we have a particularly strong reputation for the construction of logistics facilities such as warehouses and logistics terminals. Moreover, we handle a broad range of building materials and construction equipment and machinery consistent with the requirements of customers regarding cost, quality, and functionality.



From building materials to construction contracts



Freight elevator

Major Products

Fresh concrete, RC segments, steel frame construction work, steel materials, steel reinforcement bars, window and door sash installation work, shutter installation work, autoclaved lightweight concrete construction work, roof and exterior wall construction work, roof and exterior wall materials, electrical construction work, HVAC and plumbing construction works, elevator installation work, middle filters, etc.



Total customer support for creating the ideal workspace

Today, leasing is an indispensable force for businesses seeking to organize their work environments and pursue economic efficiency. Relying on leading-edge technology and in-depth services, the Leasing Division of Nittsu Shoji proposes solutions that correspond to customers' requirements, creates ideal workspaces that motivate employees, and provides total support consistent with customers' business size and strategy.

Specialized services building on our strengths as a trading company

As a general trading company, we purchase a wide range of merchandise from our business partners. This diversity enables us to offer products that will satisfy the requirements of customers, whether as a lease, purchase, or installment purchase arrangement. Moreover, our nationwide network of

sales offices allows us to provide highly specialized services at the local level. Meanwhile, our automobile leasing business for all types of vehicles has developed a reputation for accurate and expedient services including finance lease and maintenance lease offerings.

A wide range of products for leasing to meet a diversity of customer needs



Major Products

Office machinery	Computers and peripherals, telephone switchboards, multifunction printers
Distribution equipment	Forklifts, automated loading/unloading systems, containers, shovel loaders, conveyors, car wash machines
Industrial machinery	Industrial robots, textile machines, food processing equipment, printing machines, packing machines
Automobiles	Passenger cars, commercial vehicles, trucks, buses, tractors, refrigerator cars, special-purpose vehicles
Machine tools	NC lathes, drilling machines, boring lathes, milling machines, machining centers, press machines
Construction machinery	Excavators, foundation construction machines, ground leveling machines, cranes
Commercial equipment	HVAC equipment, freezer/refrigerator showcases, vending machines
Medical equipment	CT, diagnostic instruments, surgical equipment, operating equipment, testing equipment, dental equipment, laser scalpels, other medical electronic instruments
Other products	Gauges, measuring instruments, testing equipment, analyzing instruments, optical equipment, pollution control devices



Comfort and security delivered through our nationwide network

Nittsu Shoji handles a wide range of non-life insurance products, specifically automobile insurance, as well as fire insurance and accident insurance, spanning the range from safety for homes and families to comprehensive risk management for businesses. Moreover, tailored to customer needs, Nittsu Shoji also offers life insurance products that provide comfort and security. We take pride in our ability to offer prompt and reliable service for both non-life and life insurance through our nationwide network.

Non-Life Insurance Division

Spanning the range from safety for homes and families to risk management for businesses

As agent of NIPPONKOA Insurance Co., Ltd., and intermediary agent for Sonpo 24 Insurance Co., Ltd., Nittsu Shoji operates a non-life insurance agency with about 250 sales staff at business offices in over 80 locations all over Japan. Based on this scale and network size, we engage a wide range of insurance consulting activities for both households and business users.



Major Products

Automobile insurance	Car BOX (comprehensive automobile insurance), SIP (general comprehensive automobile insurance), driver insurance, compulsory automobile liability insurance
Fire insurance	Comprehensive home insurance, comprehensive housing insurance, comprehensive store insurance, comprehensive business insurance, comprehensive building insurance, earthquake insurance, REBLOCK (home and store owner's insurance with reserve-fund accumulation element)
Accident insurance	Anshin BOX (comprehensive personal accident insurance), Kurashino Anshin insurance, accident insurance with pension reserve-fund accumulation element, overseas travel insurance, domestic travel accident insurance
New insurance types	Comprehensive liability insurance, comprehensive moveable property insurance, machinery insurance, contractors' insurance, comprehensive labor accident insurance
Other insurance products	Golfers' insurance, transport insurance J Master (Anshin insurance for employees) K Master (construction work Anshin insurance) B Master (logistics Anshin insurance) Business Master (business activities Anshin insurance)

LC11-0449
SLC11-0024

Life Insurance Division

Providing Reliable Support for Surviving Family

As the largest agent of Asahi Mutual Life Insurance Co., we solicit through our nationwide network and based on careful consultation propose the insurance solutions that best fits customers' life plans.



An insurance that changes with each life stage.
Insurance King plus



Insurance for mother and child
Mother's Happiness, Child's Happiness

Major Products

Variable-return savings-type insurance	Insurance King plus, Insurance King plus Smile Kids, Mother's Happiness, Child's Happiness
Whole life insurance	New Cosmos, Yutori-to-Anshin
Endowment insurance	Asahi's endowment insurance
Term insurance with pure endowment benefit	Kibo-no-Hoken "Tsubasa," Kibo-no-Hoken "Chime"
Term insurance	Pre-stage, Pre-stage 2, ordinary term insurance
New children's insurance	Ekubo, Yume
Personal pension insurance	Kagayaki, Kagayaki Ai
Lump-sum payment personal pension insurance	Nenkin-no-sonae



Solutions to customer needs shaped by proven technology and creative ideas

Our Maintenance Division operates maintenance sites and service stations in major locations throughout Japan. Maintenance offerings include automobile safety inspections, check-ups, and repair services for various types of vehicles from large cranes to passenger cars. Additionally, the Manufacturing Division engages in design and building work ranging from car body accessories to trailers and containers.

Maintenance Division

A full array of services to handle any type of vehicle and equipment

The Maintenance Division offers a full range of services for all types of vehicles and equipment regardless of manufacturer and model. Built on proven technology and reliability, the Division has contracted with domestic and foreign manufacturers of trucks, construction equipment, and material handling equipment to serve as their designated contract partner factory. The Division also sells mechanical parts for various manufactures as well as vehicles including Volvo trucks.



New, relocated Fukuoka factory
Provides maintenance services for various types of vehicles and containers for all modes of transportation.



Key to modal-shift : 31-foot full-wing container

Manufacturing Division

A diversity of product offerings for innovative logistics

We offer a variety of products to meet all kinds of purposes and needs, ranging from the design and manufacture of trailers and containers to the design and development of vehicle accessories and own-brand products. Based on highly creative innovative ideas and technology, our approach to manufacture optimized transportation figure has earned us a strong reputation among both domestic and foreign clients.



6-axle self-steering extendible semi-trailer
Semi-trailer with allowable gross weight of 60 tons. The pallet is stretchable (3,5 meters) to carry large and heavy cargo up to 55 tons. The steering mechanism enhances ability to turn and operate.



31-foot full-wing container, contributing to carbon dioxide emission reduction

Major Own-Brand Products and Services

● Own Brand Products

Vehicle manufacture & accessories
Container production

Trailers, heavy-load trailers, pole trailers, wing trailers, double stack and other container cars, various truck accessories for vans and wing vans, custom-designed special-purpose vehicles including display pieces, accessory equipment
Railroad containers, marine & rail freight containers, warehouse containers, coastal shipping containers, ISO international marine shipping containers, waste containers, and purpose-specific containers

● Services

Statutory maintenance, inspections, and other services

Regular vehicle maintenance, maintenance for statutory vehicle safety and other inspections, crane inspections, special voluntary inspections of forklifts and aerial platforms, ETC set-up, container maintenance, water coating, sales of LED lamps and other automotive products.



Providing urban spaces with variety of amenities

We provide quality office facilities offering easy access and greater convenience such as our multi purpose facility "Granpark" where lush green open spaces are a source of comfort for office workers. We offer total support in meeting customers' needs through our supply of rental offices, condominiums, conference rooms, stores, and parking space.



Photos: Miwa Kokyo Photography Offices
Granpark (Tokyo)



Nittsu Shoji Yokohama Building (Yokohama)



Nittsu Shoji Azabu Building (Tokyo)



Commercial space for lease (Tokyo)



Yanagiya Taiyo Building (Tokyo)



Bandai Parking (Niigata)



City Parking Hakata Station East (Fukuoka)

Major Product Line

Rental buildings (rental offices, condominiums), conference rooms, commercial space, parking



Wide-ranging supply from wholesale to retail under contracts with 4 petroleum distributors

From sales of industrial-use fuel to retail services at service stations, our business comprises a wide range of operations. The absence of affiliations with specific petroleum distributors allows Nittsu Shoji to maintain contracts with several wholesalers. Centered on light oil, Nittsu Shoji has therefore been able to increase its direct sales volumes, including also in marine use heavy fuel oil, which has added to strengthening our position as a petroleum sales business.

From sales of petroleum products to the provision of retail services

In addition to providing fuel oil to the Nippon Express Group, we also engage in direct sales to users of industrial use fuel and engage in nationwide retail operations through directly managed outlets, affiliated companies, and agent service stations. In recent years, we have proactively engaged also in sales of environment friendly products and worked to meet our responsibilities as an energy supply company.



Ryogoku Service Station (Tokyo)



Bunker tanker Aikō Maru



Nittsu Energy Chugoku Co., Ltd., Shunan Service Station (Yamaguchi)

Major Products and Services

Petroleum products for automobiles, households, industrial use, and vessels
Coolants, aqueous urea solution and other chemical products, automotive products, fire extinguishers, etc.
Statutory vehicle safety inspection and maintenance, carwash services, non-petroleum products, etc.

Nittsu Shoji Fuel Card System

The Petroleum Division offers an own-brand fuel card system for corporate and co-op customers. Customers who use the Nittsu Shoji wholesale fuel card are issued for each of their vehicles a fuel purchase statement with details such as the date, place, type of fuel, amount of fuel, and price paid. The same information can also be provided as Excel data or other electronic format, allowing customers to aggregate their data by branch office, sales office, and co-op member, etc. This service is highly convenient for simplifying the vehicle management of customers with nationwide branch offices, sales offices, and coop members.

- Purchase fuel anywhere in Japan at the same price (excluding on expressways)
- Choose from four different fuel distributors
- Specify the product to be purchased
- Pay cashless



From households to industrial users, wide-ranging supply of liquefied petroleum gas

Since the launch of our own brand "Nittsu Propane" in 1962, each year we provide over 210,000 tons of liquefied petroleum gas (LP gas) throughout Japan to 800,000 households and to various industries for commercial, industrial, and automobile use. Moreover, the Division also engages in sales of residential use equipment, renovation work, and plant construction work.

A promising source of environment-friendly clean energy

With around 1,000 LP gas sales stations and three Eco-Stations for automotive CNG fuel, we cater to a diversity of customer needs, centered on 43 depots throughout Japan as well as directly managed sales offices, LP gas stations, and nationwide Nittsu Propane dealers. Because LP gas has lower carbon dioxide emission than other fossil fuels, and almost zero nitrous oxide and sulfur oxide emissions, high expectations attach to LP gas as a source of environmentally-friendly clean energy. Being a wide-area dealer, our centralized 24-hour monitoring system "Keeper 24" ensures that LP gas supply to customers is at all times safe and secure.



LP gas depot



Bulk tanker



Natural Gas Eco Station (Hachioji)

Major Products and Services

LP gas (residential, commercial, industrial, automotive), CNG (automotive), residential equipment, plant construction, etc.

Residential equipment for a life in comfort

Glass-top cooking stove

For perfect safety and convenience, all burners have intelligent temperature-sensitive Si (Safety and intelligent) sensors as standard equipment. Moreover, the installed glass tops provide ease of maintenance, safety, comfort, and hygiene.

ENE-FARM (residential-use fuel cell)

Since the ENE-FARM fuel cell is able to simultaneously generate electric power and heat up water, it is highly energy efficient and easy on the environment. Hot water generated simultaneously with electric power generation can be stored in a hot water tank until needed. Since a back-up water heater will supply hot water should the stored amount prove not enough, constant supply is assured.



Photovoltaic generation system

This photovoltaic generation system turns solar energy into electric power for priority use in the home. Since no carbon dioxide emission is involved, this method of energy generation is easy on the environment.



Electric power generation with ENE-FARM and the photovoltaic generation system

Any surplus electric power from photovoltaic generation can be sold to power companies. Since the power generation system prioritizes the use of power supplied by ENE-FARM, own consumption of photovoltaic power at home is reduced, which enables selling more photovoltaic power.

"Nippy" - The Nittsu Propane Image Character



Nippy was accepted in August 2000 as the "LP Gas Fairy" who delivers Nittsu Shoji's own-brand "Nittsu Propane" to users.

Using as a motif the "Sapphire Flame" associated with burning LP gas, the character is dressed so as to represent the image of wholesome Nature as a message that LP Gas is a source of clean energy easy on the environment.



Logistic innovation for next-generation logistics and distribution

Based on our extensive experience and track record in the field of logistics, we provide total logistics support from procurement to disassembly, packing, shipping, transporting, warehousing, and delivery. We are able to ship any item to any destination in the world and provide optimal solutions for the logistics issues and problems of our customers.

Third Party Logistics (3PL) provide high-level integrated distribution and logistics

Based on the powerful global network established by the Nittsu group and the experience and expertise accumulated over half a century, we provide customers with Third Party Logistics (3PL) designed to synchronize and align with customers' production and supply frameworks. We offer hybrid commercial distribution and logistics services that meld distribution functions from product order receipt and placement, procurement, inventory management, and sales activities, with

logistics functions such as packing, disassembly, warehousing, and transportation to assist customers in building a complete supply chain. To sharpen your competitive edge, we also focus on the implementation of advanced recognition IC tags, the development of resource-saving packages designed to reduce environmental load, and the automation of packing operations. In this way, our solutions serve to reduce customers' cost of logistics and increase business efficiency.

Service Offerings

Procurement Support Services

- Procurement, purchasing, sales
- Finance
- Order receipt and placement management
- Inventory management



Logistics Operations

- Mass-production logistics
- Equipment & machinery logistics
- Other logistics-related services



Packing Services

- Packing of mass produced items
- Packing equipment & machinery
- Special packing
- Sales of packing materials & containers





Delivering Optimal Solutions for the Customer

Business logistics involves many strategic aspects in addition to standard logistics activities, such as transporting, warehousing, material handling, packing, distribution processing, and logistics information processing. To meet the global logistics needs compelled by customers' supply and demand chains, we emphasize strategic functions (planning,

forecast, management, R&D, system development) in every aspect of distribution and logistics from the procurement of materials and products to production and sales. To this end, Nittsu Shoji reviews customer logistics from the perspective of the customer, and together with the customer works out an optimal solution.

Business Domains

Distribution

Logistics

Packing

Solution Menu

- Commercial distribution + VMI + JIT development support
- Import & export agency services
- Full distribution and logistics outsourcing services
- 3PL (3rd Party Logistic)
- VMI (Vender Managed Inventory)
- JIT (Just in Time [Supply])
- Logistics system development: Placing & receiving orders, inventory management, distribution processing, import/export management, transportation management
- Relocation of equipment and machinery: Comprehensive relocation service from disassembly and packing to transporting and installation
- Import & export agency services
- Mass produced items packing (products and parts): Knock down packing, service parts packing, finished goods packing
- Packing of equipment and machinery: Plants, precision machinery, die assemblies, etc.
- Purpose-specific packing: Heavy cargo, bulky cargo, long cargo, artifacts, etc
- Development and sales of packing materials: Direct import of wood materials, PPL, plywood, special paperboards
- Sales of packing & containers: Steel cases / pallets (returnable & one-way)
- Formation of C-TPAT compliant work environments



Experts in each field provide optimal packing solutions

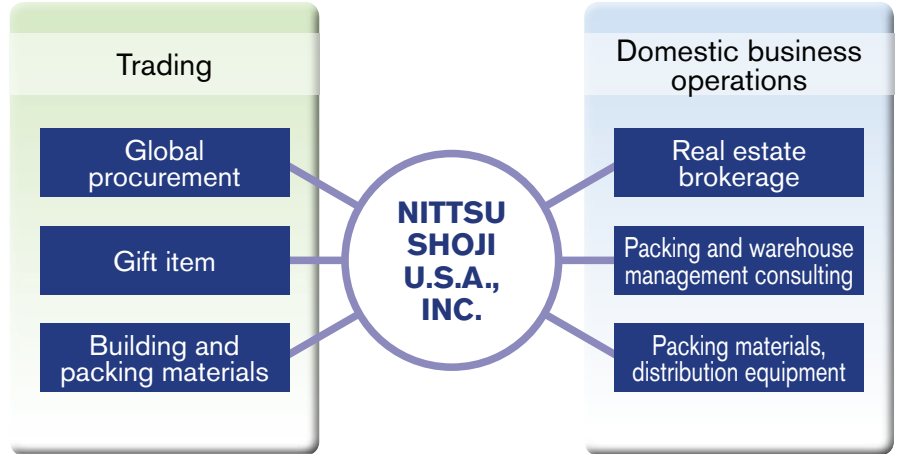
Since its establishment nearly half a century ago, Nittsu Shoji has made constant advancement in its packing technology. Our professionals experienced in their fields will offer optimal packing solutions that increase transportation efficiency and reduce costs. Moreover, responding to the social requirements posed by environmental issues, Nittsu Shoji counts among the first to develop new materials and cases such as in-house produced reusable steel cases for packing.



Leased office premises

NITTSU SHOJI U.S.A., INC.

Head Office: Chicago, USA
 Year Established: March 1995
 Lines of Business: **Trading support services; sales of packing materials, drop shipment, gift items; export of packing materials, building materials, food, and miscellaneous goods; real estate brokerage**
 Address: 2101 S. Arlington Heights Road, Suite #107, Arlington Heights, IL 60005 U.S.A.
 TEL: +1-847-952-9300
 Home Page: <http://www.nittsushojiusa.com>



Company outside view

DALIAN NITTSU CONTAINER MANUFACTURING CO., LTD.

Head Office: Dalian Economic & Technological Development Zone, China
 Year Established: February 1991
 Lines of Business: **Manufacturing and sales of containers, roll boxes, and different types of pallets**
 Address: No. 12, Teishan West Road, Dalian Economic & Technological Development Zone, Liaoning, China
 TEL: +86-411-8761-8727
 Home Page: <http://www.dlritong.com.cn>

■ Main products based on own-brand design, development, and manufacture (ISO 9001 acquisition)





Leased office premises



NITTSU SHOJI (SHANGHAI) TRADING CO., LTD.

Head Office: Shanghai, China
 Year Established: March 2011
 Lines of Business: **1. Mail order sales operations**
2. Merchandise sales operations (Packaging materials, materials handling equipment, trailers, containers, different types of pallets)
3. Export and import trade business

Address: C-23-11F Shanghai Mart, No. 2299, Yan-an road West, Changning District, Shanghai, China
 TEL: +86-21-5106-1164
 Home Page: <http://www.nittsushoji.com.cn>



Company outside view



Warehouse



Pinthong LS Center

NITTSU SHOJI (THAILAND) CO., LTD.

Head Office: Ayutthaya, Thailand
 Pinthong LS Center: Chonburi Province
 Year Established: December 1996
 Lines of Business: **Packing, procurement logistics, JIT delivery, packing/import & export agency services, sales of packing materials, trading support service**

Address: Head Office: 103 Moo 1, Hi-Tech Industrial Estate, Ban Lane, Bang Pa-in, Ayutthaya 13160, Thailand
 TEL: +66-35-350-977
 Home Page: <http://www.nittsushoji.co.th>
 Address: Pinthong LS Center: Pinthong Industrial Estate (Project 2) 150/73 Moo 9, T. Nongkham, A. Sriracha, Chonburi 20110, Thailand
 TEL: +66-38-347-008





Company outside view

PT. NITTSU SHOJI INDONESIA

Head Office: Bekasi, Indonesia
Year Established: September 2003
Lines of Business: **Packaging service, packing/import & export agency services, warehousing & storage services, sales of packing materials and packing cases, trading support services**
Address: MM2100 Industrial Town Block DD-3, Cikarang Barat, Bekasi 17520 Indonesia
TEL: +62-21-8998-1816



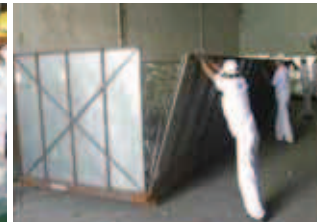
Warehouse



Interior parts packing



Assembled motorcycle packing



Heavy machinery packing



Exterior packing



Equipment disassembly and installation



Heavy machinery packing



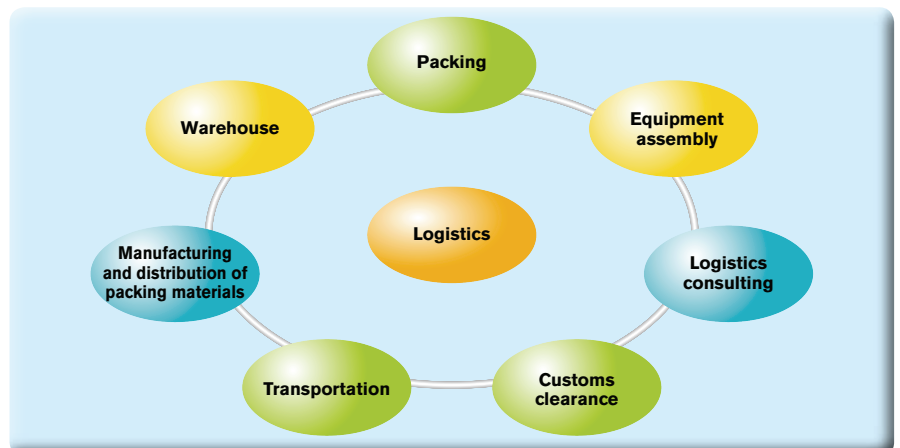
Company outside view

NITTSU SHOJI (WUHAN) CO., LTD.

Head Office: Wuhan Economic & Technological Development Zone, China
Branch Office: Guangzhou
Year Established: April 2004
Lines of Business: **Packaging service, packing/import & export agency services, warehousing & storage services, sales of packing materials and packing cases, transportation management**
Address: Head Office: Chuangye 4th Road, Wuhan Economic & Technological Development Zone, Wuhan, Hubei, China
TEL: +86-27-8423-7088
Address: Branch Office: No. 62, Bigang Road, Nangang, Huangpu District, Guangzhou, Guangdong, China
TEL: +86-20-8244-7022



Warehouse



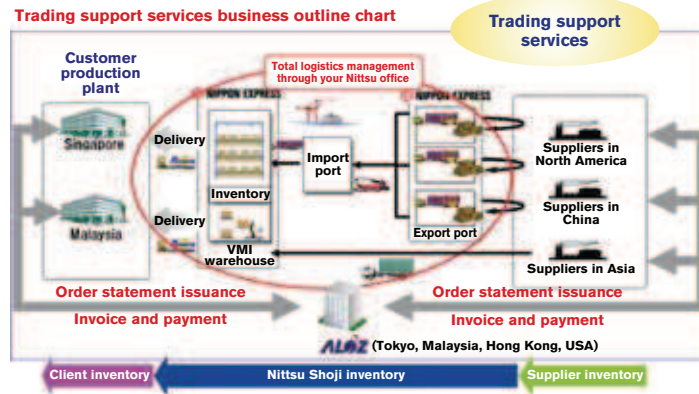


Leased office premises



NITTSU SHOJI (H.K.) CO., LTD.

Head Office: Hong Kong Special Administrative Region, China
 Year Established: August 2004
 Lines of Business: **Trading support services; purchasing and sales of logistics related merchandise**
 Address: 1501B, Tower 1, China Hong Kong City, Canton Road, Tsim Sha Tsui, Kowloon, Hong Kong
 TEL: +852-2317-6671



Purchasing and sales of logistics related merchandise



Leased office premises

NITTSU SHOJI INDIA PRIVATE LIMITED

Head Office: Haryana, India
 Year Established: September 2012
 Lines of Business: **Packing, product production, logistics, and warehousing; automotive parts assembly, sales of packing materials.**
 Address: The Pavilion Business Suite No. 4, 5 at 2nd floor 339/2 Meharauli Rd, Gurgaon, Haryana, India
 TEL: +91-124-4506000



Leased office premises

NITTSU SHOJI CO., LTD. MALAYSIA REPRESENTATIVE OFFICE

Year Established: October 2008
 Lines of Business: **Marketing for "Trading support service", local customer support**
 Address: Suite 23A, 07A, Level 23A Johor Bahru City Square Office Tower No.106-108, Jalan Wong Ah Fook 80000 Johor Bahru, Johor, Malaysia
 TEL: +60-77223-7540

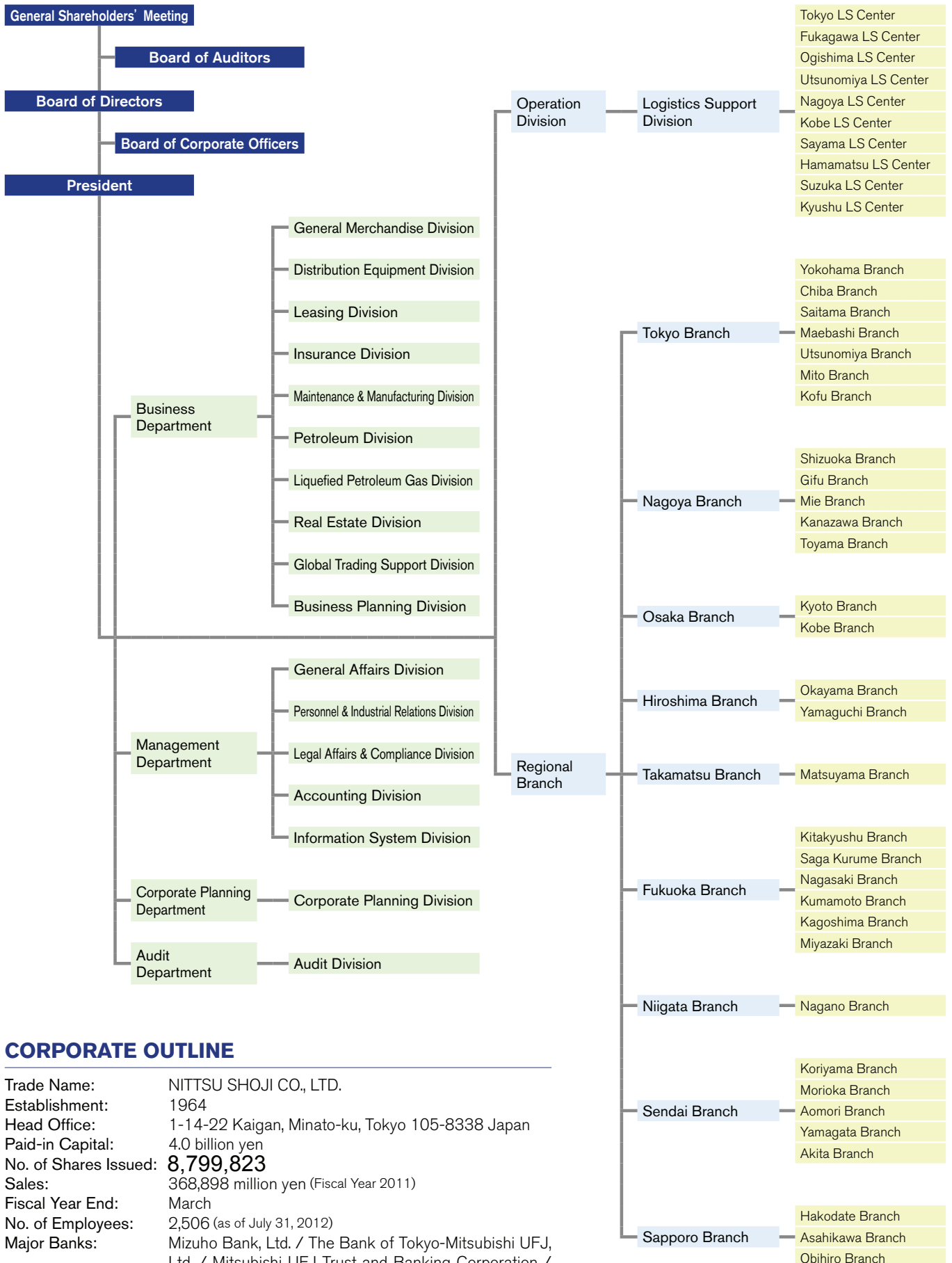
Procurement operations for office machinery parts



Head Office, Logistics Support Division, LS Centers, and Branch Offices

● Head Office	1-14-22 Kaigan, Minato-ku, Tokyo 105-8338 Japan	TEL: +81-3-6734-8800
General Merchandise Division	1-14-22 Kaigan, Minato-ku, Tokyo 105-8338 Japan	TEL: +81-3-6734-8801
Distribution Equipment Division	1-14-22 Kaigan, Minato-ku, Tokyo 105-8338 Japan	TEL: +81-3-6734-8802
Leasing Division	1-14-22 Kaigan, Minato-ku, Tokyo 105-8338 Japan	TEL: +81-3-6734-8803
Insurance Division	1-14-22 Kaigan, Minato-ku, Tokyo 105-8338 Japan	TEL: +81-3-6734-8804
Maintenance & Manufacturing Division	1-14-22 Kaigan, Minato-ku, Tokyo 105-8338 Japan	TEL: +81-3-6734-8805
Petroleum Division	1-14-22 Kaigan, Minato-ku, Tokyo 105-8338 Japan	TEL: +81-3-6734-8806
Liquefied Petroleum Gas Division	1-14-22 Kaigan, Minato-ku, Tokyo 105-8338 Japan	TEL: +81-3-6734-8807
Real Estate Division	1-14-22 Kaigan, Minato-ku, Tokyo 105-8338 Japan	TEL: +81-3-6734-8808
Global Trading Support Division	1-14-22 Kaigan, Minato-ku, Tokyo 105-8338 Japan	TEL: +81-3-6734-8810
Tokyo Factory	1-11-25 Hayase, Toda-shi, Saitama 335-0036 Japan	TEL: +81-48-449-0100
● Logistics Support Division	1-14-22 Kaigan, Minato-ku, Tokyo 105-8338 Japan	TEL: +81-3-6734-8830
Tokyo LS Center	2-1 Tanabe-shinden, Kawasaki-ku, Kawasaki-shi, Kanagawa 210-0856 Japan	TEL: +81-44-366-1111
Fukagawa LS Center	2-2-25 Fukagawa, Koto-ku, Tokyo 135-0033 Japan	TEL: +81-3-3641-7131
Ogishima LS Center	23 Higashi-ogishima, Kawasaki-ku, Kawasaki-shi, Kanagawa 210-0869 Japan	TEL: +81-44-287-3220
Utsunomiya LS Center	7-8 Hiraide-kogyodanchi, Utsunomiya-shi, Tochigi 321-0905 Japan	TEL: +81-28-661-2771
Nagoya LS Center	2-1-4 Tomihama, Yatomi-shi, Aichi 498-0069 Japan	TEL: +81-567-66-5353
Kobe LS Center	3-1-4 Mikage-honmachi, Higashinada-ku, Kobe-shi, Hyogo 658-0046 Japan	TEL: +81-78-854-5861
Sayama LS Center	1-3-4 Shin-sayama, Sayama-shi, Saitama 350-1331 Japan	TEL: +81-42-952-5124
Hamamatsu LS Center	1-10-37 Takaoka-higashi, Naka-ku, Hamamatsu-shi, Shizuoka 433-8117 Japan	TEL: +81-53-436-1011
Suzuka LS Center	7651-10 Aza Ishimaru, Kou-cho, Suzuka-shi, Mie 513-0836 Japan	TEL: +81-59-378-1171
Kyushu LS Center	1-3-16 Hakozaki-futo, Higashi-ku, Fukuoka-shi, Fukuoka 812-0051 Japan	TEL: +81-92-643-7085
● Tokyo Branch	1-14-22 Kaigan, Minato-ku, Tokyo 105-8338 Japan	TEL: +81-3-6734-8840
Yokohama Branch	2-19-3 Takashima, Nishi-ku, Yokohama-shi, Kanagawa 220-0011 Japan	TEL: +81-45-461-2061
Chiba Branch	1-14-22 Imai, Chuo-ku, Chiba-shi, Chiba 260-0834 Japan	TEL: +81-43-265-5651
Saitama Branch	1079-1 Oaza Shimo-ochiai, Chuo-ku, Saitama-shi, Saitama 338-0002 Japan	TEL: +81-48-824-2266
Maebashi Branch	3-14-1 Honmachi, Mebashi-shi, Gunma 371-0023 Japan	TEL: +81-27-224-9513
Utsunomiya Branch	1-2-5 Ekimae-dori, Utsunomiya-shi, Tochigi 321-0964 Japan	TEL: +81-28-625-0474
Mito Branch	1-2-21 Jonan, Mito-shi, Ibaraki 310-0803 Japan	TEL: +81-29-232-0303
Kofu Branch	2-26-1 Marunouchi, Kofu-shi, Yamanashi 400-0031 Japan	TEL: +81-55-226-1510
Tokyo Corrugated Board Factory	8-17-1 Fukaya, Ayase-shi, Kanagawa 252-1108 Japan	TEL: +81-467-70-0400
● Nagoya Branch	4-12-17 Meieki-minami, Nakamura-ku, Nagoya-shi, Aichi 450-8730 Japan	TEL: +81-52-581-8450
Shizuoka Branch	2-20-38 Furusho, Aoi-ku, Shizuoka-shi, Shizuoka 420-0812 Japan	TEL: +81-54-655-0086
Gifu Branch	10-1 Nagazumi-cho, Gifu-shi, Gifu 500-8175 Japan	TEL: +81-58-252-1225
Mie Branch	1340 Aza Yamagamitani, Tarusaka-cho, Yokkaichi-shi, Mie 510-8037 Japan	TEL: +81-59-334-7117
Kanazawa Branch	2-15-1 Honmachi, Kanazawa-shi, Ishikawa 920-0853 Japan	TEL: +81-76-262-8555
Toyama Branch	141-1 Kurosaki, Toyama-shi, Toyama 939-8214 Japan	TEL: +81-76-492-6180
● Osaka Branch	3-2-103 Umeda, Kita-ku, Osaka-shi, Osaka 530-0001 Japan	TEL: +81-6-6451-6781
Kyoto Branch	2 Kaminakano-cho, Omyadori-Kizuyabashi-sagaru, Shimogyo-ku, Kyoto-shi, Kyoto 600-8248 Japan	TEL: +81-75-343-6721
Kobe Branch	4-1-21 Hamabe-dori, Chuo-ku, Kobe-shi, Hyogo 651-0083 Japan	TEL: +81-78-252-2081
● Hiroshima Branch	8-18 Naka-cho, Naka-ku, Hiroshima-shi, Hiroshima 730-0037 Japan	TEL: +81-82-546-1081
Okayama Branch	1-1 Nishiki-machi, Okayama-shi, Okayama 700-0902 Japan	TEL: +81-86-231-8026
Yamaguchi Branch	1589 Ogori-kamigo, Yamaguchi-shi, Yamaguchi 754-0001 Japan	TEL: +81-83-973-2270
● Takamatsu Branch	2-6-3 Nishiki-machi, Takamatsu-shi, Kagawa 760-0020 Japan	TEL: +81-87-851-0991
Matsuyama Branch	393-3 Tomihisa-machi, Matsuyama-shi, Ehime 791-8034 Japan	TEL: +81-89-973-2112
● Fukuoka Branch	1-1 Shimogofuku-machi, Hakata-ku, Fukuoka-shi, Fukuoka 812-0034 Japan	TEL: +81-92-291-9111
Kitakyushu Branch	15-63 Nishiminato-machi, Kokurakita-ku, Kitakyushu-shi, Fukuoka 803-0801 Japan	TEL: +81-93-581-5811
Saga Kurume Branch	2-6-19 Takano, Kurume-shi, Fukuoka 830-0002 Japan	TEL: +81-942-31-1655
Nagasaki Branch	6-5 Iwakawa-machi, Nagasaki-shi, Nagasaki 852-8106 Japan	TEL: +81-95-865-9251
Kumamoto Branch	1-5-8 Suizenji, Kumamoto-shi, Kumamoto 862-0950 Japan	TEL: +81-96-387-8822
Kagoshima Branch	1-8 Hama-machi, Kagoshima-shi, Kagoshima 892-0812 Japan	TEL: +81-99-224-2184
Miyazaki Branch	2-5-10 Hiroshima, Miyazaki-shi, Miyazaki 880-0806 Japan	TEL: +81-985-24-7766
● Niigata Branch	4-4-20 Bandai, Chuo-ku, Niigata-shi, Niigata 950-8539 Japan	TEL: +81-25-245-1121
Nagano Branch	(Toho Place 1F) 950-1 Oaza Kurita, Nagano-shi, Nagano 380-0921 Japan	TEL: +81-26-228-6701
● Sendai Branch	3-1-1 Nigatake, Miyagino-ku, Sendai-shi, Miyagi 983-8686 Japan	TEL: +81-22-236-9111
Koriyama Branch	32-1 Aza Yamanaka, Fukuyamamachi-Fukuhara, Koriyama-shi, Fukushima 963-8061 Japan	TEL: +81-24-923-5660
Morioka Branch	2-1, Dai-5-Chiwari, Oaza Hiromiyasawa, Yahaba-cho, Shiwa-gun, Iwate 028-3621 Japan	TEL: +81-19-698-3324
Aomori Branch	1-1-8 Shinmachi, Aomori-shi, Aomori 030-0801 Japan	TEL: +81-17-777-3361
Yamagata Branch	3-3-3 Mamigasaki, Yamagata-shi, Yamagata 990-0810 Japan	TEL: +81-23-681-0255
Akita Branch	1-1 Araya-Okitamachi, Akita-shi, Akita 010-1634 Japan	TEL: +81-18-888-8839
● Sapporo Branch	16-1-9 Kita 3-jo Nishi, Chuo-ku, Sapporo-shi, Hokkaido 060-0003 Japan	TEL: +81-11-633-9012
Hakodate Branch	14-10 Wakamatsu-cho, Hakodate-shi, Hokkaido 040-0063 Japan	TEL: +81-138-26-7811
Asahikawa Branch	8-21-1 Nagayama Kita 2-jo, Asahikawa-shi, Hokkaido 079-8431 Japan	TEL: +81-166-47-2350
Obihiro Branch	1-1-10 Nishi Nijujo Minami, Obihiro-shi, Hokkaido 080-2470 Japan	TEL: +81-155-35-3171
Automobile Sales Company		
Taiyo Nissan Auto Sales Co., Ltd.	4-2-19 Shibaura, Minato-ku, Tokyo 108-8523 Japan	TEL: +81-3-5232-6015
Business Support Company		
ALOE Business Support Co., Ltd.	4-2-19 Shibaura, Minato-ku, Tokyo 108-8523 Japan	TEL: +81-3-6809-3431

Organization Chart



CORPORATE OUTLINE

Trade Name: NITTSU SHOJI CO., LTD.
 Establishment: 1964
 Head Office: 1-14-22 Kaigan, Minato-ku, Tokyo 105-8338 Japan
 Paid-in Capital: 4.0 billion yen
 No. of Shares Issued: **8,799,823**
 Sales: 368,898 million yen (Fiscal Year 2011)
 Fiscal Year End: March
 No. of Employees: 2,506 (as of July 31, 2012)
 Major Banks: Mizuho Bank, Ltd. / The Bank of Tokyo-Mitsubishi UFJ, Ltd. / Mitsubishi UFJ Trust and Banking Corporation / The Norinchukin Bank / Sumitomo Trust and Banking
 Home page: <http://www.nittsushoji.co.jp>

Network in Japan

● Total number of full-service branches: 9 ● Other branches: 33 Business establishments: 236



Overseas Offices

DALIAN NITTSU CONTAINER MANUFACTURING CO., LTD.

NITTSU SHOJI (WUHAN) CO., LTD.

NITTSU SHOJI (WUHAN) CO., LTD., Guangzhou Office

NITTSU SHOJI CO., LTD., Head Office

NITTSU SHOJI (SHANGHAI) TRADING CO., LTD.

NITTSU SHOJI (H.K.) CO., LTD.

NITTSU SHOJI (THAILAND) CO., LTD.

NITTSU SHOJI CO., LTD. MALAYSIA REPRESENTATIVE OFFICE

PT. NITTSU SHOJI INDONESIA

NITTSU SHOJI U.S.A., INC.